

## RF Termination Load

- ✔ Optional Power: 1W-10KW
- ✔ Optional frequency range: DC-50GHz
- ✔ Low standing wave coefficient
- ✔ Anti-pulse strong anti-burnout ability
- ✔ High reliability and good repeatability



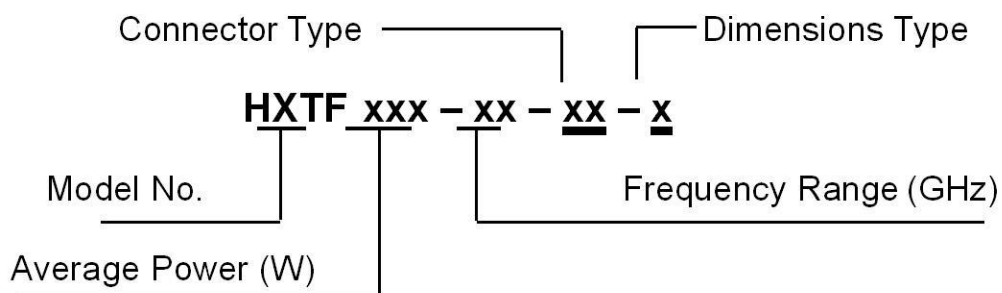
### Description

Coaxial fixed terminations absorb RF& microwave energy and are commonly used as dummy loads of antenna and transmitter. They are also used as match ports in many multi-port microwave device such as circulators and directional couplers to make these ports which are not involved in the measurement be terminated in their characteristic impedance in order to ensure an accurate measurement.

HXTF serial coaxial fixed termination feature wide frequency band, low VSWR, excellent capacity in anti-pulse and anti-burnout.

In this section, you can find the coaxial terminations with individual data sheets containing product description, specifications and outline drawings by a quick reference guide.

### Order Information



Please confirm with us the main parameters of terminations such as average power, frequency range, connector type and dimensions Type (if have any), or your special demand.

# 100W Termination Load

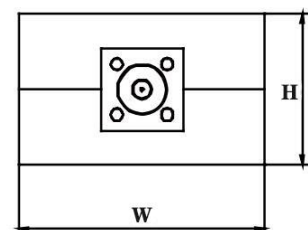
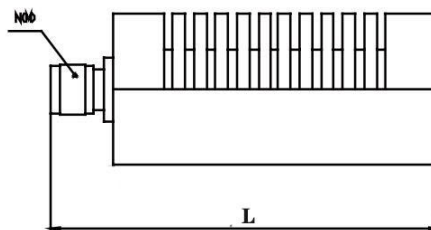
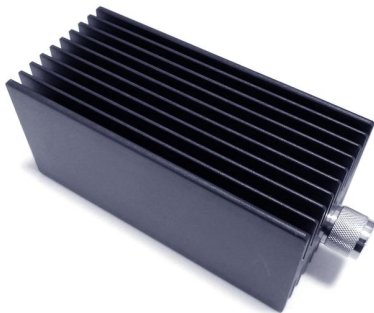
## Technology Manual

### 1. Design Features

- ◆ HXTF100 Series Termination Load Frequency DC-18GHz optional◆UWB operating frequency
- ◆ Low standing wave coefficient ◆ Good repeatability
- ◆Strong anti-pulse ability

### 2. Description :

Model Number	Freq. Range	Average Power	Connector Type(Optional)	VSWR Max
HXTF100-4-N	DC-4GHz	100W	N/SMA	1.15
HXTF100-8-N	DC-8GHz			1.25
HXTF100-10-N	DC-10GHz			1.35
HXTF100-18-N	DC-18GHz			1.55
Impedance: 50 Ω				
Temperature Range: -55°C~+125°C				
★:Average power: 100W corresponds to an ambient temperature of 25°C, when the temperature rises to 125°C, the power decreases linearly to 10W				
★:Peak power: 5KW (5μs pulse width, 2% duty cycle)				
★ :Model Default N-type Connector If other connectors need to be marked -N or -SMA				
Mechanical behavior				
Connector shell	Nickel plated brass			
Cavity	Aluminum housing			
Size	Size	A Type	E Type	
	L(mm)	150	169	
	W(mm)	79	68	
	H(mm)	79	70	
Weight	A:1.5Kg		E: 1.12Kg	



#### Remind:

- 1,Outline Drawing: (Dimensions Unit: mm, Dimensions Tolerance: ±5%)
- 2,Shape A or E type customers can choose, if not specified, it will be random

# 100W Termination Load

## Technology Manual

### 1. Design Features

- ◆ HXTF100G Series Termination Load Frequency DC-18GHz optional◆UWB operating frequency
- ◆ Low standing wave coefficient ◆ Good repeatability
- ◆ Strong anti-pulse ability

### 2. Description :

Model Number	Freq. Range	Average Power	Connector Type	VSWR Max
HXTF100G-12.4-N	DC-12.4GHz	100W	N	1.25
HXTF100G-18-N	DC-18GHz			1.35

Impedance: 50 Ω

Temperature Range: -55°C~+125°C

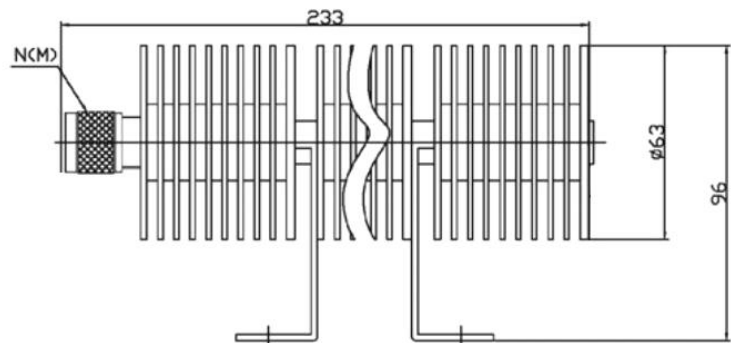
★:Average power: 100W corresponds to an ambient temperature of 25°C, when the temperature rises to 125°C, the power decreases linearly to 10W

★:Peak power: 1KW (5μs pulse width, 2% duty cycle)

★:Precautions! When working continuously for more than 5 minutes or the surface temperature exceeds 70°C, it needs to add more than 55W fan for cooling

#### Mechanical behavior

Connector shell	Nickel plated brass
Cavity	Aluminum shell black paint
Size	M: φ 63*233*96mm
Weight	750g



#### Remind:

1,Outline Drawing: (Dimensions Unit: mm, Dimensions Tolerance: ±5%)