

# 800W Termination Load

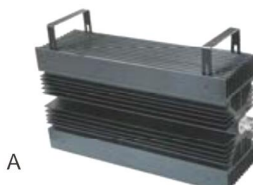
## Technology Manual

### 1. Design Features

- ◆ HXWTF800 Series Termination Load Frequency DC-4GHz optional◆UWB operating frequency
- ◆ Low standing wave coefficient ◆ Good repeatability
- ◆ Strong anti-pulse ability

### 2. Description :

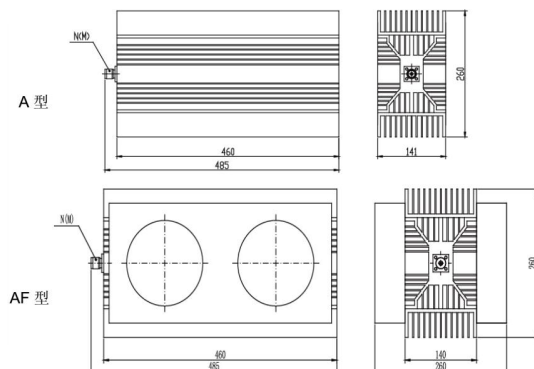
Model Number	Freq. Range	Average Power	Connector Type	VSWR Max
HXTF800-1G-X	DC-1GHz	800W	N(M or F)	1.15
HXTF800-2G-X	DC-2GHz			1.30
HXTF800-3G-X	DC-3GHz			1.45
HXTF800-4G-X	DC-4GHz			1.55
Impedance: 50 Ω				
Temperature Range: -55℃~+125℃				
<p>★:X: Represents appearance (A,AF) AF: Means equipped with a fan</p> <p>★:Average power: 800W corresponds to an ambient temperature of 25℃, when the temperature rises to 125℃, the power decreases linearly to 100W</p> <p>★:Peak power: 10KW (5μs pulse width, 8% duty cycle)</p> <p>★:Cooling method: Air cooling</p>				
Mechanical behavior				
Connector shell	Nickel plated brass			
Cavity	Aluminum shell painting			
Size	A:485*260*141mm		AF:485*260*260mm	
Weight	17.5Kg			



A



AF



### Remind:

- 1,Outline Drawing: (Dimensions Unit: mm, Dimensions Tolerance: ±5%)
- 2,The shape can be selected (A/AF) If not specified, the default A type (Type A is not equipped with a fan)